



“Diversity and Social Inclusion (eDiSI)”

Keywords

Diversity / social inclusion / intercultural sensitivity / social isolation / migration / low social economic status (SES) / disability / poverty

Short description

Diversity and Social Inclusion is an online program of study aimed at enhancing awareness of different kinds of social inequalities rooted in many different ways of diversity in our contemporary societies. It supports to develop core competences in health care professionals and social workers based on blended learning approach. This approach could improve the sensibility to differences in cultural, socio-economic and health status, and the unequal distribution of social resources. A final assignment is required to be presented in the last day of the course, which also serves as the ground for assessment.

Day-to-day info

This online programme offers a unique opportunity for the students to meet with fellow students and teaching staff from different countries and professional backgrounds to listen to, discuss and debate issues around inclusion of the most vulnerable group of people in our societies.

The future professionals participate in bridging the social gaps during their everyday work, so the importance of socio-cultural sensitivity, intercultural skills must be highly emphasized in their training.

During this programme the students, as healthcare professionals, are challenged to think ahead and find opportunities to make a difference in the health situation and inclusion of clients. The students will attend online meetings (inspiration sessions, workshops, panel discussions and group work) and work on assignments/tasks. The central methodology for the final assignment will be through ‘Storytelling’ in which they will focus on one (vulnerable) group and incorporate the learnings within the theme: ‘Diversity and Social Inclusion’.

Learning Outcomes

After completing the course:

1. The student defines the central concepts of social inclusion; diversity; structural and cultural competency; intersectionality; super-diversity.
2. The student is able to give examples of different kinds of social inequalities in key areas of social life: home life, work, school, healthcare, localities.
3. The student describes and is aware of the importance of structural and cultural sensitivity, intercultural communication and cooperation skills as core competences for future professionals.
4. The student is aware of the meaning of diversity and inclusion for at least one vulnerable group in the society.
5. The student can make a transfer from look, listen and think from the perspective from a vulnerable group / person, to daily practice as a professional.

Validation

3ECTs (workload: 74 hours)

3 ECTs will only be rewarded when the assessment requirements are met:

- Active participation in all events and elements of the programme online
- Active participation in group work
- Make and hand in the assignments during the course

- Accomplishment and presentation of the final assignment

Dates

4 weeks

Kick-off: 2nd of November 2020 – End of the course: 27th of November 2020

Tools

Online team work on Microsoft Teams & online collaboration tools (camera and mic required)

Working time in Central European Time Zone

Target audience

Students from Higher Education Institutions, particularly second and third year students of healthcare and social studies, with a basic knowledge of healthcare issues and an interdisciplinary and international interest.

Outline / schedule

100% online course

4 weeks, daily from 17:00-18:30 CET

+ students working independantly 4-6h/week

1. **Daily lectures and panel discussions**
 - compulsory attendance
 - 17:00-18:30
2. **Group work in teams of 5**
 - participation compulsory
 - during the week in consultation with the team
3. **Individual preparatory work**
 - independant
4. **Online helpdesk and coaches**

Preliminary Timetable

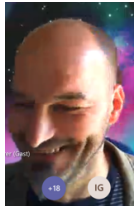
SUNDAY	MONDAY	TUESDAY	WEDNESDAY	THURSDAY	FRIDAY
18:00-19:00 Welcome drink	09:30-12:00 Introduction	Teamwork & Assignment time	Teamwork & Assignment time	Teamwork & Assignment time	Teamwork & Assignment time
	Get to know your team				
	17:00-19:00 Lecture Diversity & Social Inclusion	17:00-19:00 Lecture Social Isolation	17:00-19:00 Lecture Methodologic al Support	17:00-19:00 Lecture Disability	17:00-19:00 Helpdesk/co aching

Instructors workshop facilitators



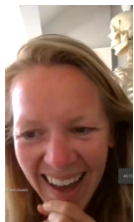
António Ferreira

Escola Superior de Saúde Norte da Cruz Vermelha Portuguesa (ESSNorteCVP), Portugal.



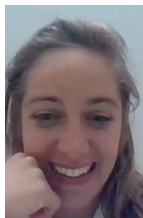
Attila Dobos

Attila Dobos is assistant professor at the Department of Social Sciences in Semmelweis University, Faculty of Health Sciences. By his background Attila is a cultural anthropologist and philosopher having intercultural hermeneutics as his main research interest. He has been working in the field of healthcare for more than 15 years now with a focus on different aspects of sociocultural diversity and interculturality. Besides lecturing on social scientific subjects and bioethics, he is active in international research and educational programs. Attila represents COEHRE Academy as a council member since 2015.



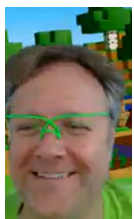
Daniëlle Lammers

Rotterdam University of Applied Sciences, The Netherlands



Emi van Nieuwenhuysse

Artevelde University of Applied Sciences, Belgium



Pieter Vaes

GTB, Belgium

Participation fee

We accept a maximum of 50 participants from different professional and cultural backgrounds. Participants will work in teams of 5 persons.

WHO	COST
COEHRE Member (students)	€ 60
COEHRE LIC Member (students) from Hungary, Portugal, Spain	€ 50
Non-Members COEHRE	€ 120
LIC (Low Income Countries - reduced participation fee) - Nepal, Suriname, Armenia, Georgia, etc	€ 50

Registration

Register on website or provided link in e-mail

Deadline: 24 Oct. 2020

Selection will be based on diversity of participants.

Note: Confirmation of participation will be sent out by e-mail before 25 Oct. 2020

Participation will only be valid after payment of the invoice by 30 Oct. 2020

Cancellation policy

The course will be invoiced prior to the start of the programme. Full payment will be required by 30 Oct. 2020

In the event of cancellation by the participant, our policy states, a full refund will be given, provided we receive notification of cancellation at least 7 days prior to the course date. Cancellations received after 26.10.2020 are not entitled to a refund. Refunds will not be given for a “no show” on the day.

In the event of the course requiring rescheduling due to instructor illness or unavailability, the cost of the course will be refunded in full, or alternatively rescheduled at a later date, should you not be able to attend the rescheduled course a full refund will be provided.



Offered by: COEHRE Academy

The COEHRE Academy is one of the activities within the COEHRE consortium. The aim of the Academy is to enhance international, interdisciplinary, interprofessional cooperation and capacity building within health education among the members institutions.

The Academy acts as a platform that initiates, supports and coordinates different activities. It offers opportunities to create, stimulate, found and intensify networking of partner institutions and to develop joint initiatives.

For further information on this programme, please contact: coehre.academy@arteveldhs.be