



COHEHRE NEWSLETTER

FEBRUARY 2021

Introduction New Council

COEHRE Academy
Aija Ahokas
Metropolia UAS, Finland

COEHRE Strategic Management
Marc Elie
HAN, The Netherlands

COEHRE PRESIDENT
COEHRE Strategic Management
Patricia Claessens
Arteveldehogeschool, Belgium



COEHRE Research
Annemie Spooren
PXL, Belgium

COEHRE Research
Ester Goutan Roura
Uvic-UCC, Spain

COEHRE Academy
Attila Dobos
Semmelweis UAS, Hungary



We regret not being able to give Jen and Jeroen a proper 'Au revoir!' seeing the Covid 19-pandemic but rest assured that we will make up for it and thank them for all of their efforts and realisations once we can all meet up again!





Message from the council

2020 was a year like no other.

A year in which the COVID-19 pandemic affected millions of people.

When the crisis hit the world, COHEHRE was forced to take on the challenge of re-steering the organisation, re-organise our modi operandi and above all be inventive!

COHEHRE ACTIVITIES



Webinars on coping with the Covid-19 pandemic have been organised to share ways of dealing with it within the institutions, to give new ideas on how to cope with the restraints a pandemic brings, on how new courses were organised to ensure that students would be able to enjoy international collaborations nevertheless the situation they are finding themselves in.

The following free Covid-19 related webinars were organised:

- 24.09.20
Ergonomically-friendly online lectures for both lecturer and students
- 22.10.20
Teaching and learning in Nursing – facing pandemic times
- 19.11.20
Transforming the international occupational therapy “FAB” semester into the online environment
- 21.01.21
Intercultural learning in Nursing during a Covid pandemic

Upcoming free webinars

- 11.02.21 Enhancing student involvement in online learning
- 18.03.21 Supporting students for meaningful learning

MORE ACTIVITIES DURING THE PANDEMIC



The following activities could count on a lot of student interest and satisfaction of having had the opportunity to exchange thoughts, to collaborate, to learn from other students from Belgium to Russia to anywhere in and out of Europe. An experience beyond borders!

- 19.04.20-15.05.20
eDiSI Spring (Diversity and Social Inclusion)
- 02.11.20-27.11.20
eDiSI Autumn (Diversity and Social Inclusion)
A course aimed at enhancing awareness of different kinds of social inequalities.

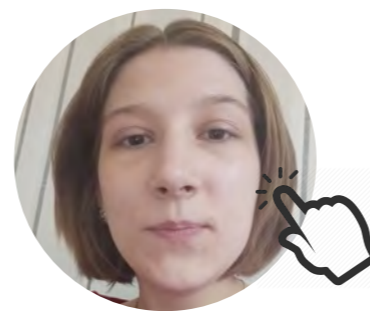
CLICK on the students to watch their testimonials on the eDiSI course!



Inês, Portugal



Ione, United Kingdom



Valeria, Russia



Sarah, Austria



• 13.10.20-05.12.20

Creating a Social Entrepreneurship to fight Poverty

Poverty is a global problem on many levels. Living in poverty causes inequality and hardship in nutrition, education, health and various other aspects. Poverty is often inherited. Social entrepreneurship is one way to address these issues. Students work in interdisciplinary teams to explore, research and understand real world problems around poverty and empathize with people to solve problems and create solutions. Creativity and the ability to develop better solutions together are key competences in future work life.

Find out how Tamira experienced the course by reading her self-assessment comprising her weekly reflections, peer feedback, team assessment, self-assessment and gratitude. **CLICK** on her picture below to find out.



Tamira, The Netherlands

• 26.01.21-31.01.21

IPPE (Interdisciplinary Programme on Palliative and End-of Life Care)

Introduction to palliative and end-of-life care, communication with clients, bereavement, family and environment; ethical issues related to end-of-life decisions and euthanasia, spiritual and existential pain; caregiver's perspective; intercultural issues. Workshops: complementary care and interdisciplinary cooperation (haptonomy, aromatherapy, reiki, art therapy). Student project: hands-on practice during workshops in nursing homes for elderly



- 26.01.21
IPPE webinar: Panel of experts discussing palliative and end-of life care

The COHERRE webinar: 'IPPE-Panel discussion with experts' could count on a big turnout (242 participants) proving that the subject of palliative and end-of-life care is one that is very much living among the students and staff.

The webinar consisted of 2 parts.

In the first part, the topic of 'Medical decision making in the end-of-life and the place of euthanasia in end-of-life care' was discussed with a panel of experts and in the second part the focus lied on 'International perspectives on ethical issues in end-of-life care related to the COVID-19 pandemic'.

If this would have piqued your interest and you would like to learn more on these subjects , you are welcome to read the report by [CLICKING](#) on the picture below.



COMING UP



• 11.02.21

Free webinar: Enhancing student involvement in online learning

Using examples and good practices from our health care department, we try to give some tips, tricks and tools to enhance student involvement through interactivity and active learning during online synchronous or asynchronous classes.

Click [here](#) for more info

• 18.03.21

Free webinar: Supporting students for meaningful learning

Online teaching has increased enormously lately because of COVID-19 and its effect on education. Being able to study and work online is becoming more and more a way of working in all fields. In health care as well as in social work it is commonly used eg. in mental health and for distance rehabilitation. Being able to use tools which enables communication from a distance is essential for future experts.

Lately there has been a lot of information about students being tired and bored of studying online. Some might say this is because of lack of communication, some because of teachers not having enough skills to facilitate meaningful learning online or because of other reasons. This webinar will be a practical session to learn and share practices on how to engage students for meaningful online learning.

Keywords: online learning, student engagement, learning community, visualization

Click [here](#) for more info

• 20.03.21-22.05.21

Creating a Social Entrepreneurship to fight Poverty

Poverty is a global problem on many levels. Living in poverty causes inequality and hardship in nutrition, education, health and various other aspects. Poverty is often inherited. Social entrepreneurship is one way to address these issues. Students work in interdisciplinary teams to explore, research and understand real world problems around poverty and empathize with people to solve problems and create solutions. Creativity and the ability to develop better solutions together are key competences in future work life.

Click [here](#) for more info

• 20.05.21-26.05.21

Nature and Adventure Promoting Wellbeing

This course will teach a mindset of using nature with our clients and to find out more about our own relation towards the environment and life that surrounds us. Making us realise the importance of environments and meaningful experiences for our clients and use them as a part of our work as health and social care professional.

Click [here](#) for more info

COEHRE RESEARCH

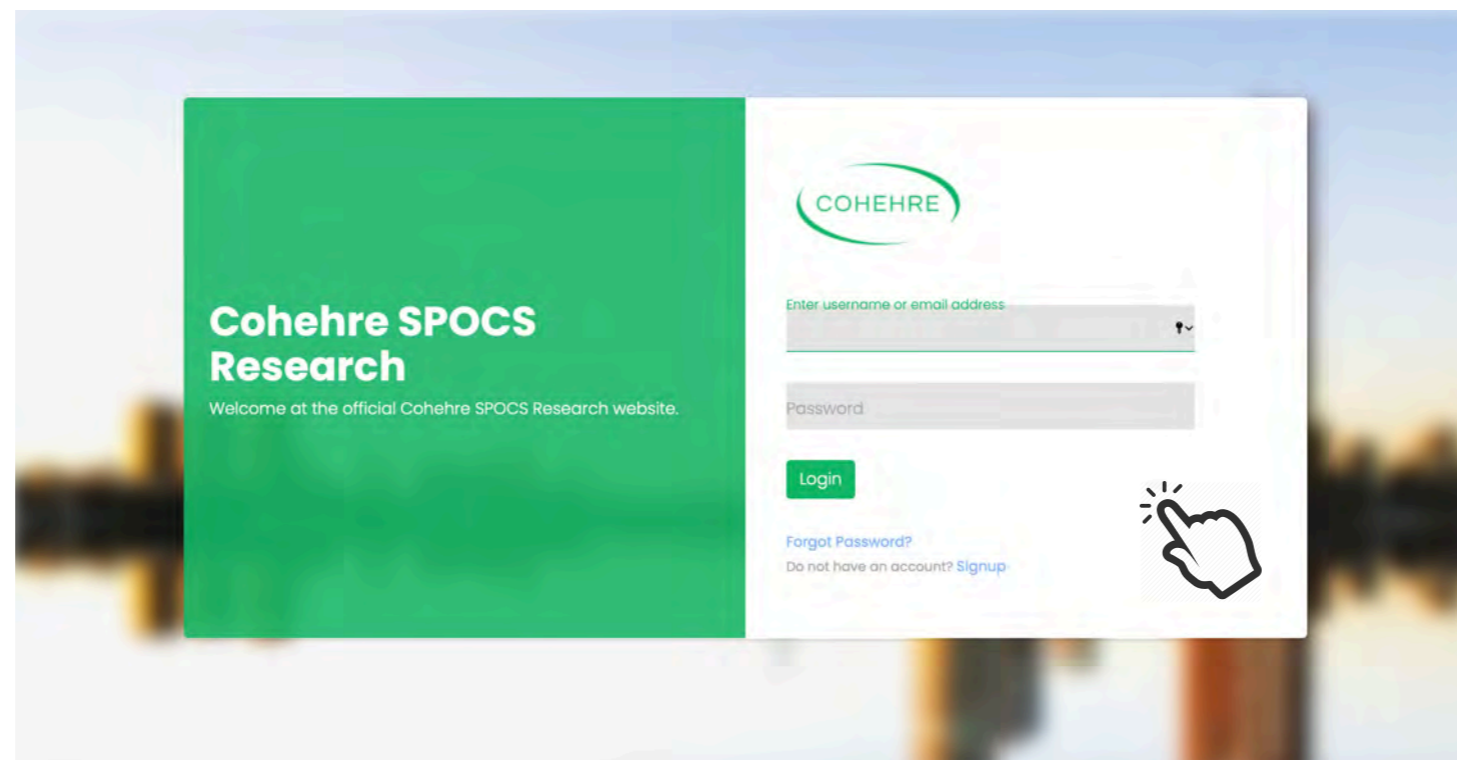
RESEARCH DISCUSSION PLATFORM

The COEHRE Research branch didn't sit still!

A research discussion platform has been developed to offer you an easy way to find funding, calls or even start collaborations. It will also be a hub where issues regarding research could be discussed. The platform is ready to be launched!

The SPOCs of each institution have been asked to enroll, so that you could start exploring the advantages the platform could bring. If your research SPOC wouldn't have entered their details as yet, please, ask them to do so!

It will be another way to get the maximum out of your membership!



CALL FOR COUNCIL MEMBER

As Attila Dobos' term is coming to an end, we are looking for a **council member with a link towards the COEHRE Academy** to fill this position.

Find out what the job as a council member entails [here](#)

You are welcome to fill out the application form [here](#)



www.coehre.com